

# New Home Warranty Program

Workmanship  
Distribution Systems  
Structural



## Workmanship Warranty

Quality is important, especially in your new home. Your workmanship warranty establishes the standards applicable to the fit, finish, and materials used in the construction of your home.

- |                            |                     |
|----------------------------|---------------------|
| 1 Cabinets and countertops | 7 Roof and flashing |
| 2 Carpentry and framing    | 8 Basement floor    |
| 3 Windows                  | 9 Doors             |
| 4 Flooring finishes        | 10 Trim             |
| 5 Exterior finishes        | 11 Tile             |
| 6 Paint                    |                     |



## Distribution Systems Warranty

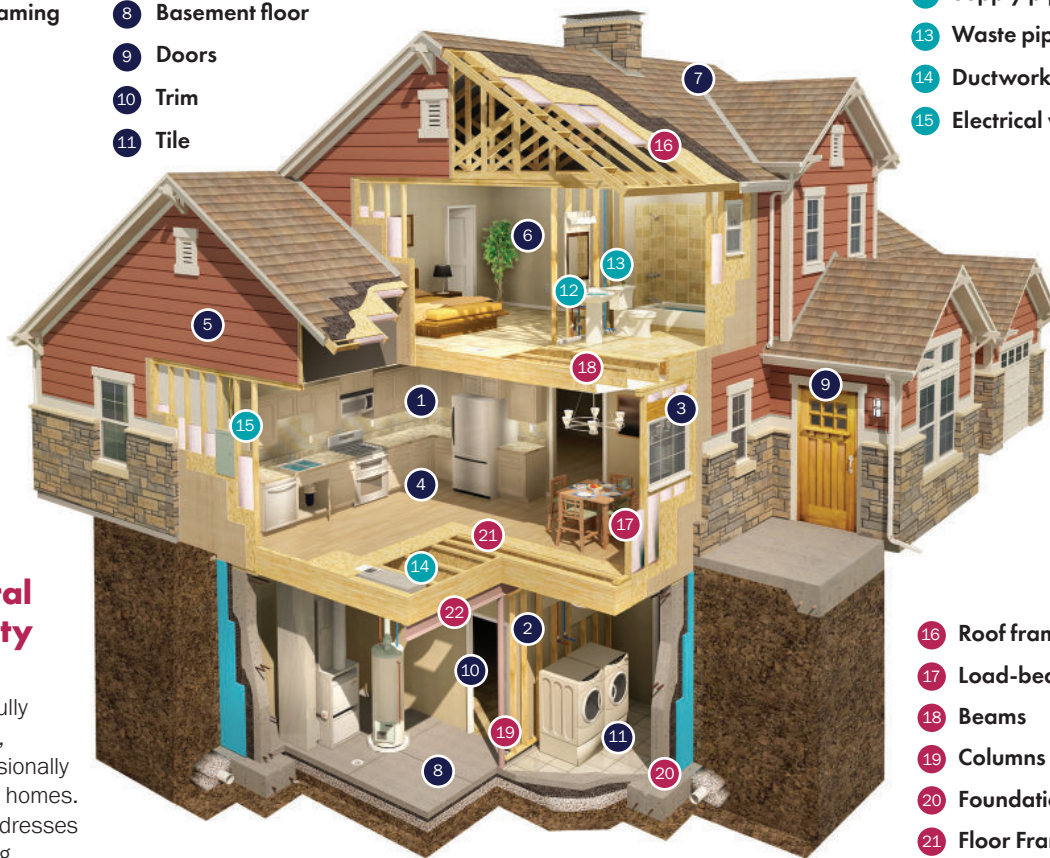
You will rarely see behind the walls of your new home, but essential functions such as electrical, plumbing, and mechanical systems are working behind the walls. Your distribution systems warranty establishes the standards for your home's electrical, plumbing, and mechanical systems.

- 12 Supply piping
- 13 Waste piping
- 14 Ductwork
- 15 Electrical wiring



## Structural Warranty

While your home was carefully constructed and inspected, unforeseen problems occasionally arise, even in the best-built homes. Your structural warranty addresses the designated load-bearing elements of your home.



- 16 Roof framing systems
- 17 Load-bearing walls
- 18 Beams
- 19 Columns
- 20 Foundation systems
- 21 Floor Framing
- 22 Girders



Homeowners register at  
**2-10.com/registerhome**

- Easily search your digital warranty book
- View, download or print your warranty documents
- Enjoy exclusive access to our Home Appliance Discount program
- Add systems & appliances Home Service Plan

