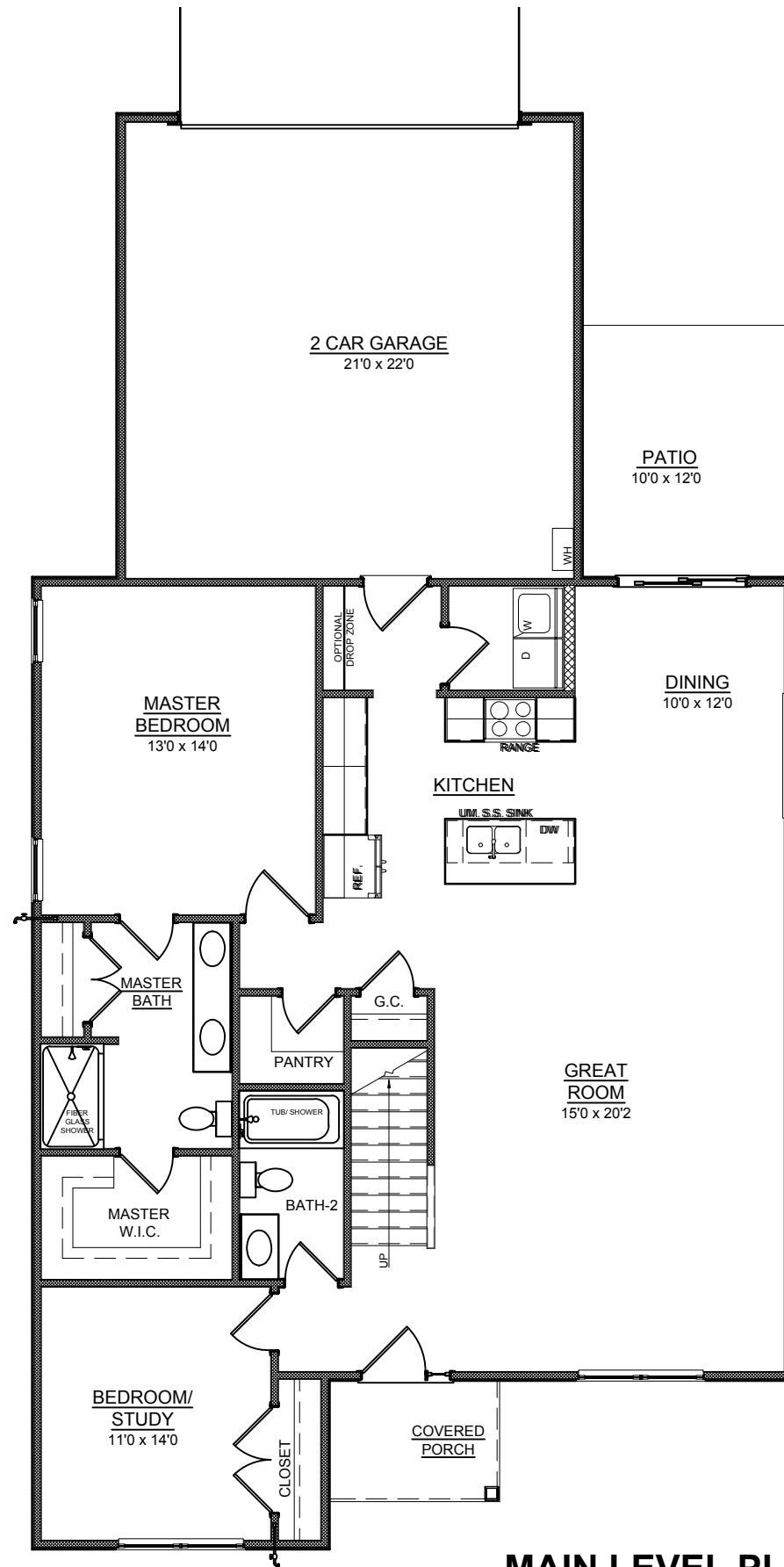


BOXWOOD TRACT HOUSE:

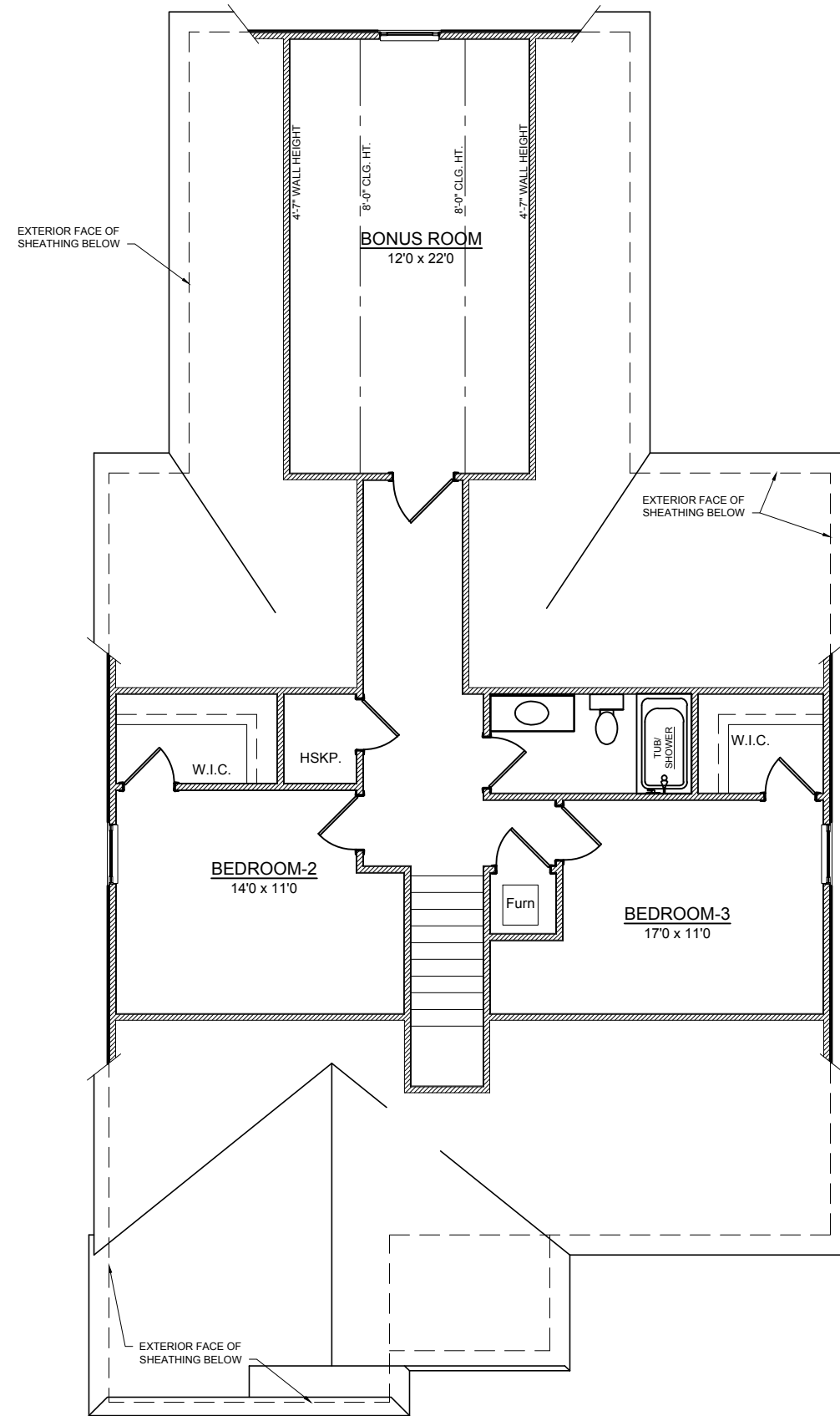
MAIN LEVEL:	1,480 SQ. FT.
UPPER LEVEL:	612 SQ. FT.
BONUS ROOM	339 SQ. FT.
FRONT PORCH:	46 SQ. FT.
REAR PATIO	120 SQ. FT.
2 CAR GARAGE:	484 SQ. FT.

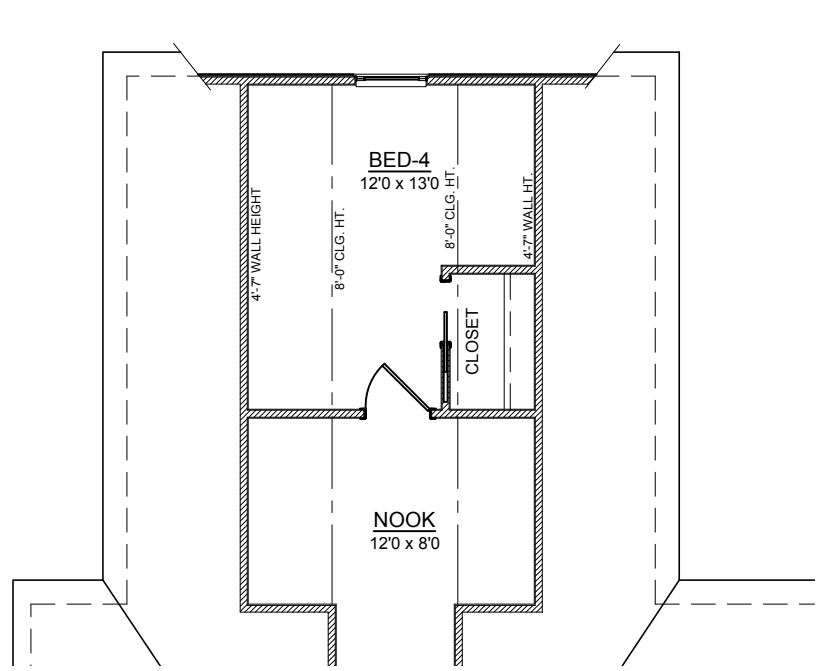


MAIN LEVEL PLAN

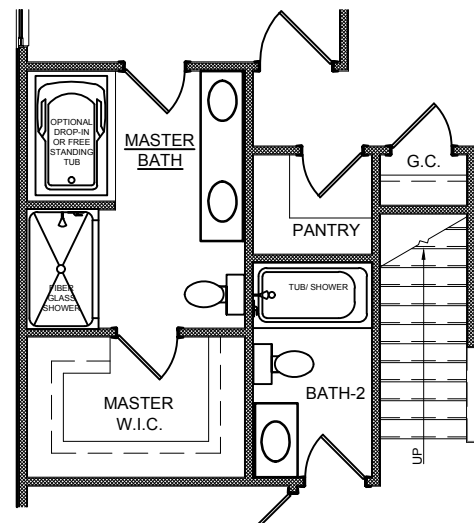


**UPPER LEVEL PLAN
BOXWOOD TRACT HOUSE:**

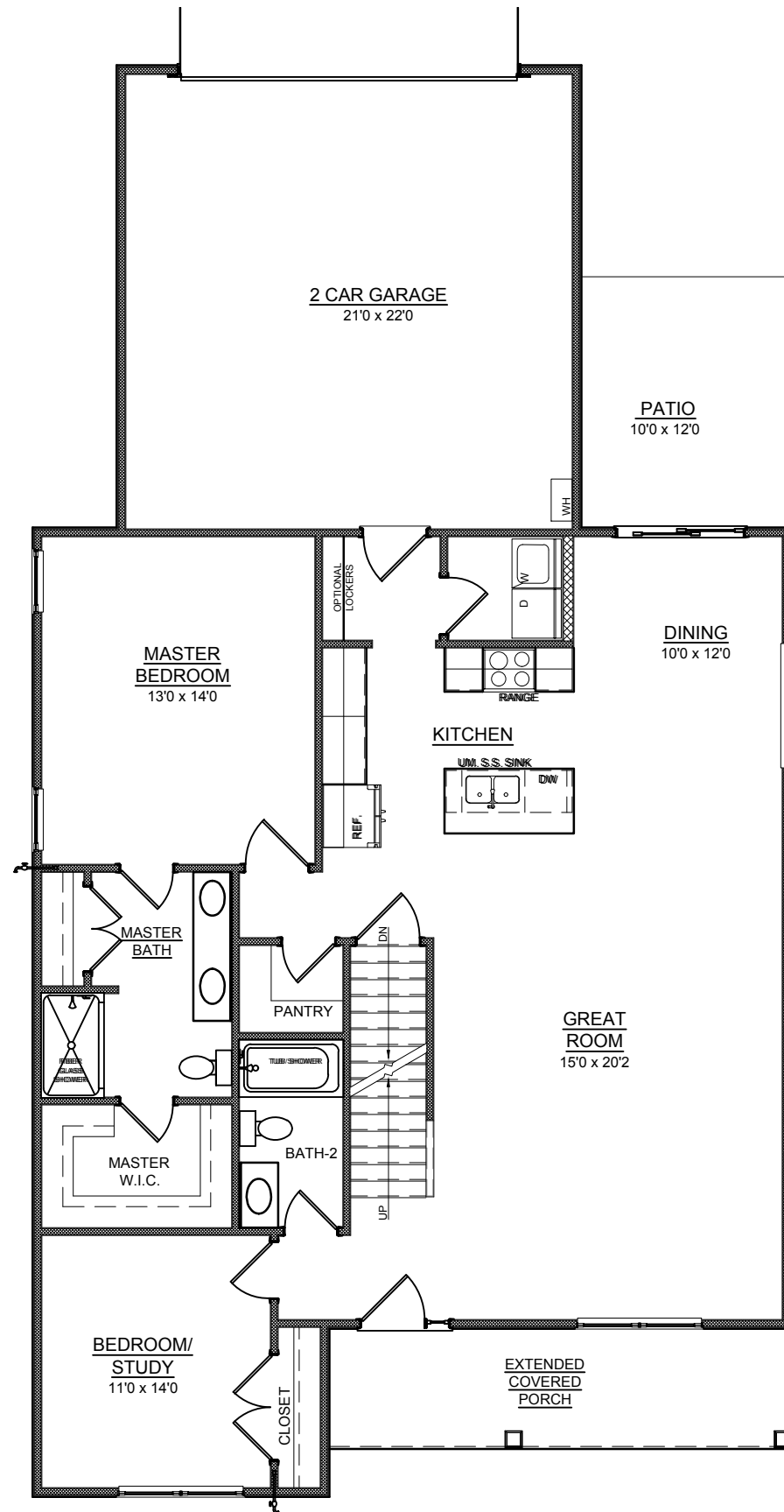




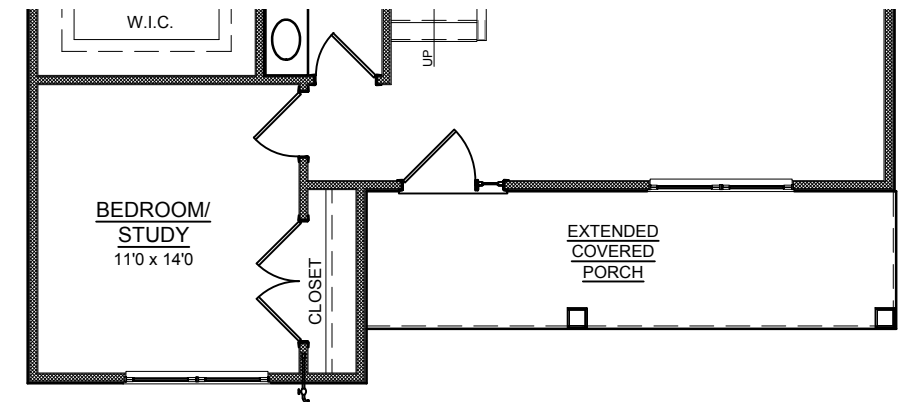
ADD BEDROOM OPTION



ADD MASTER TUB OPTION



**BASEMENT OPTION
ACCESS PLAN**



EXTENDED FRONT PORCH OPTION

BOXWOOD TRACT HOUSE





**ELEVATION A - BASE VINYL
BOXWOOD TRACT HOUSE**





**ELEVATION B - STONE FRONT
BOXWOOD TRACT HOUSE**





**ELEVATION C - BRICK FRONT
BOXWOOD TRACT HOUSE**





**ELEVATION D - CRAFTSMAN
BOXWOOD TRACT HOUSE**





ELEVATION E - FARM HOUSE
BOXWOOD TRACT HOUSE

