

**MAIN LEVEL PLAN
TOPAZ TRACT HOUSE:**

MAIN LEVEL: 1,800 SQ. FT.
 FRONT PORCH: 133 SQ. FT.
 2 CAR GARAGE: 533 SQ. FT.





**ELEVATION A - BASE VINYL
TOPAZ TRACT HOUSE**





ELEVATION B - STONE FRONT
TOPAZ TRACT HOUSE





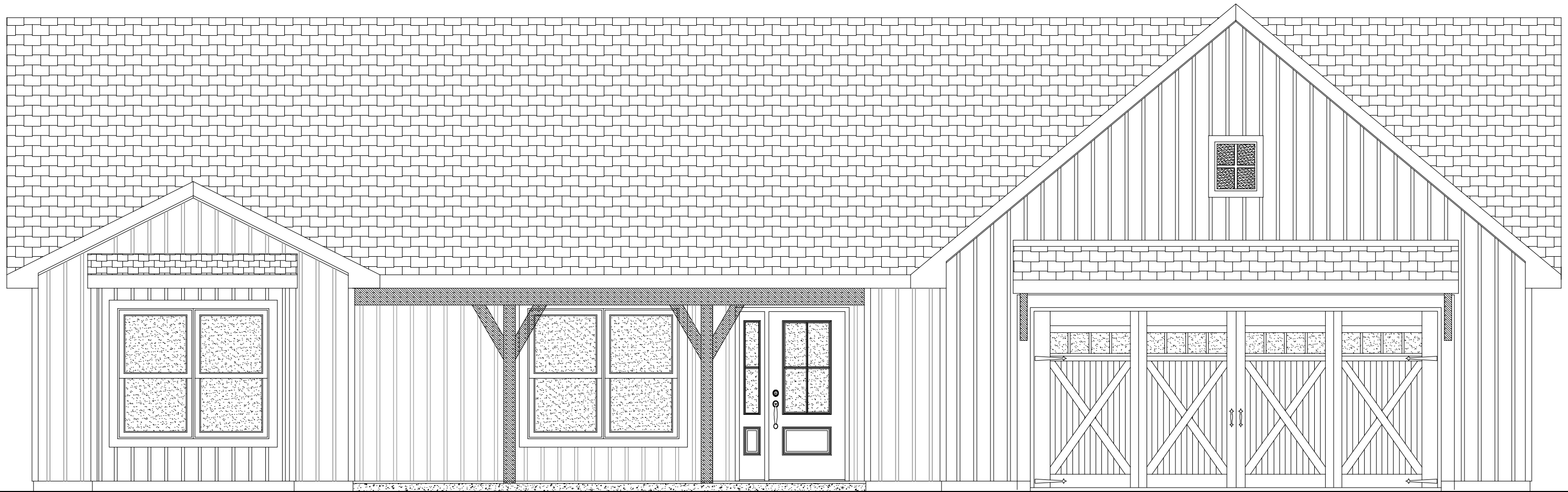
**ELEVATION C - BRICK FRONT
TOPAZ TRACT HOUSE**





**ELEVATION D - CRAFTSMAN
TOPAZ TRACT HOUSE**





ELEVATION E - FARM HOUSE
TOPAZ TRACT HOUSE

