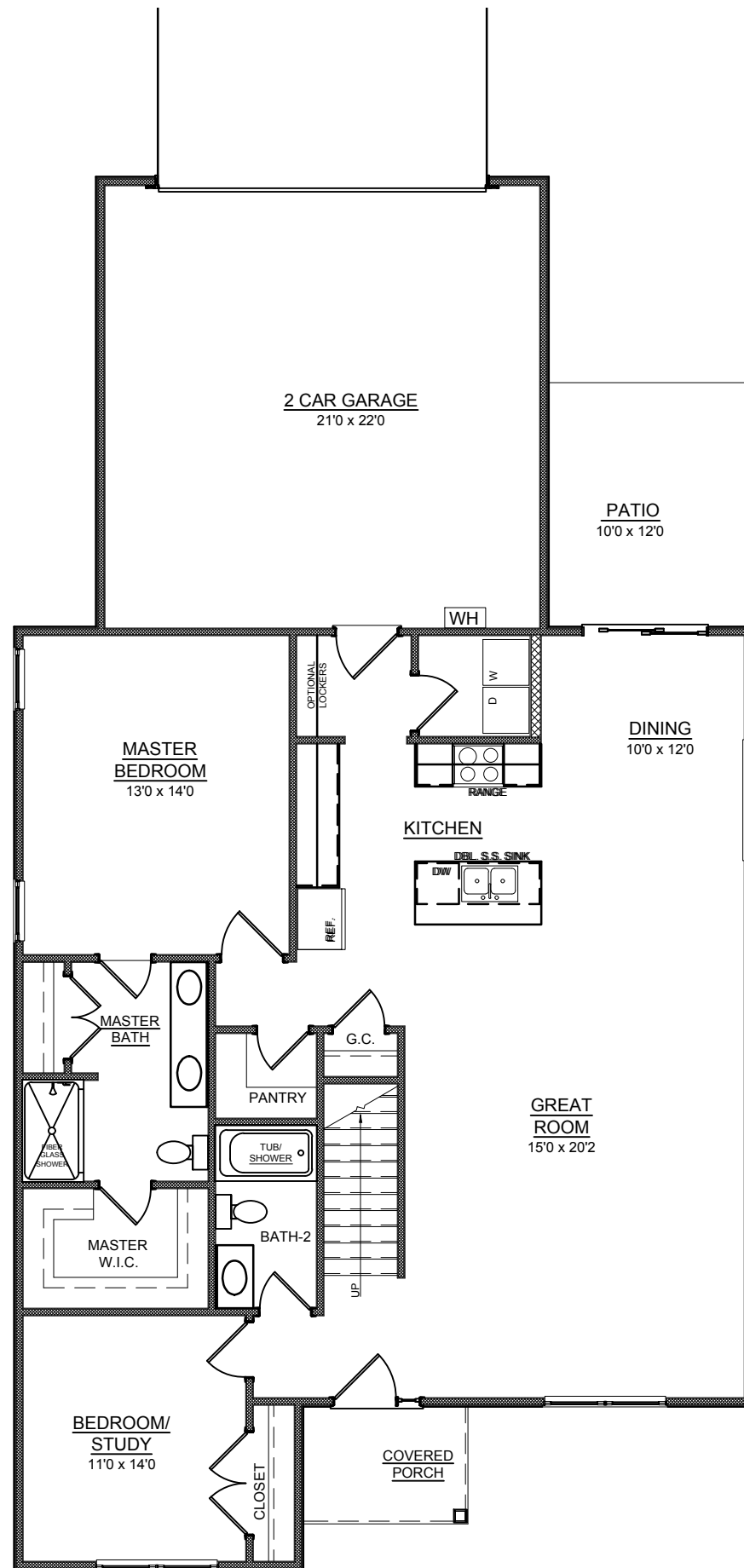


Boxwood Floor Plan

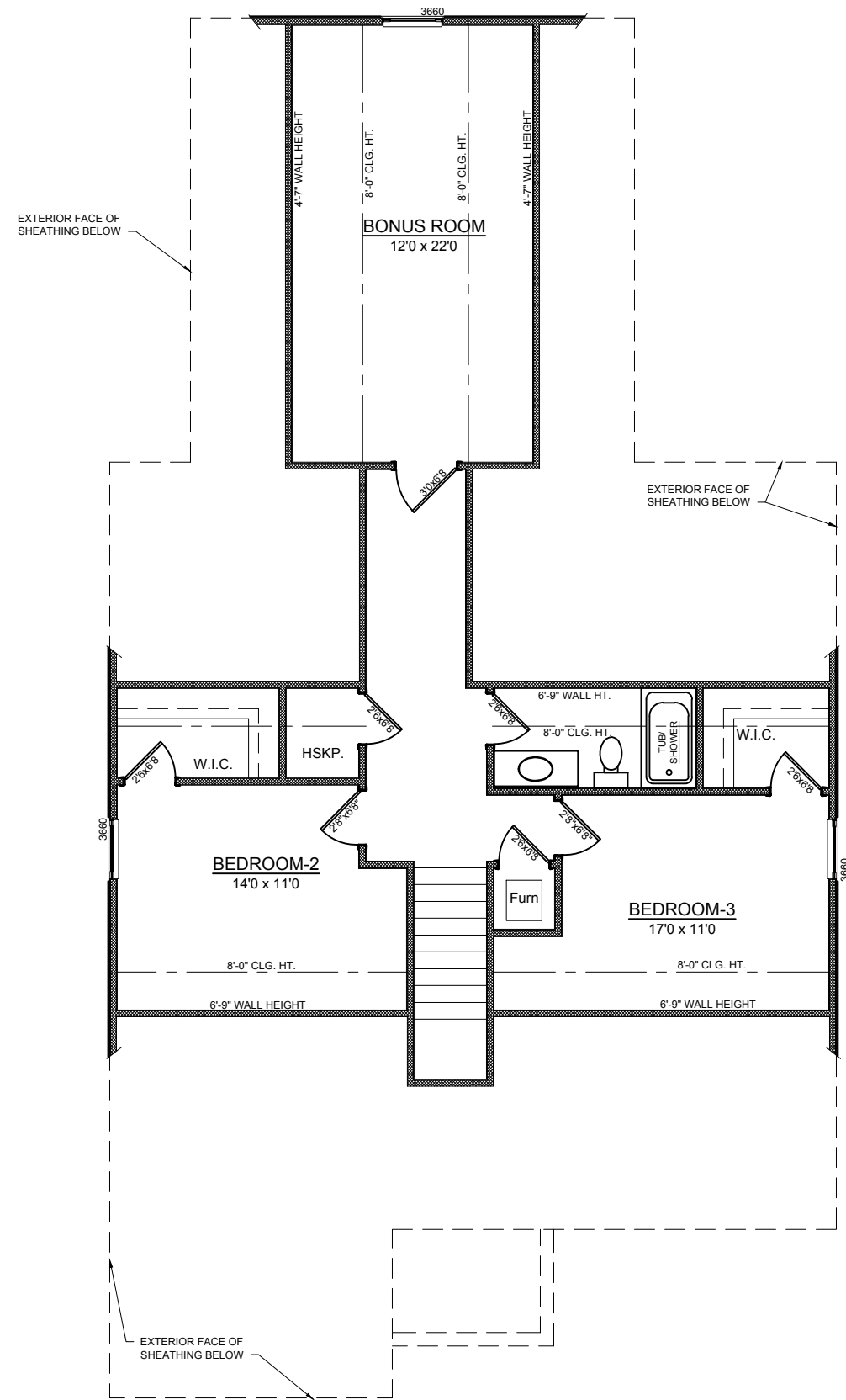


**MAIN LEVEL PLAN
BOXWOOD TRACT HOUSE:**

MAIN LEVEL:	1,480 SQ. FT.
UPPER LEVEL:	612 SQ. FT.
BONUS ROOM	339 SQ. FT.
FRONT PORCH:	46 SQ. FT.
REAR PATIO	120 SQ. FT.
2 CAR GARAGE:	484 SQ. FT.



UPPER LEVEL PLAN
BOXWOOD TRACT HOUSE:





ELEVATION A - BASE VINYL
BOXWOOD TRACT HOUSE



ELEVATION B - STONE FRONT
BOXWOOD TRACT HOUSE



ELEVATION C - BRICK FRONT
BOXWOOD TRACT HOUSE



ELEVATION D - CRAFTSMAN
BOXWOOD TRACT HOUSE



ELEVATION E - FARM HOUSE
BOXWOOD TRACT HOUSE